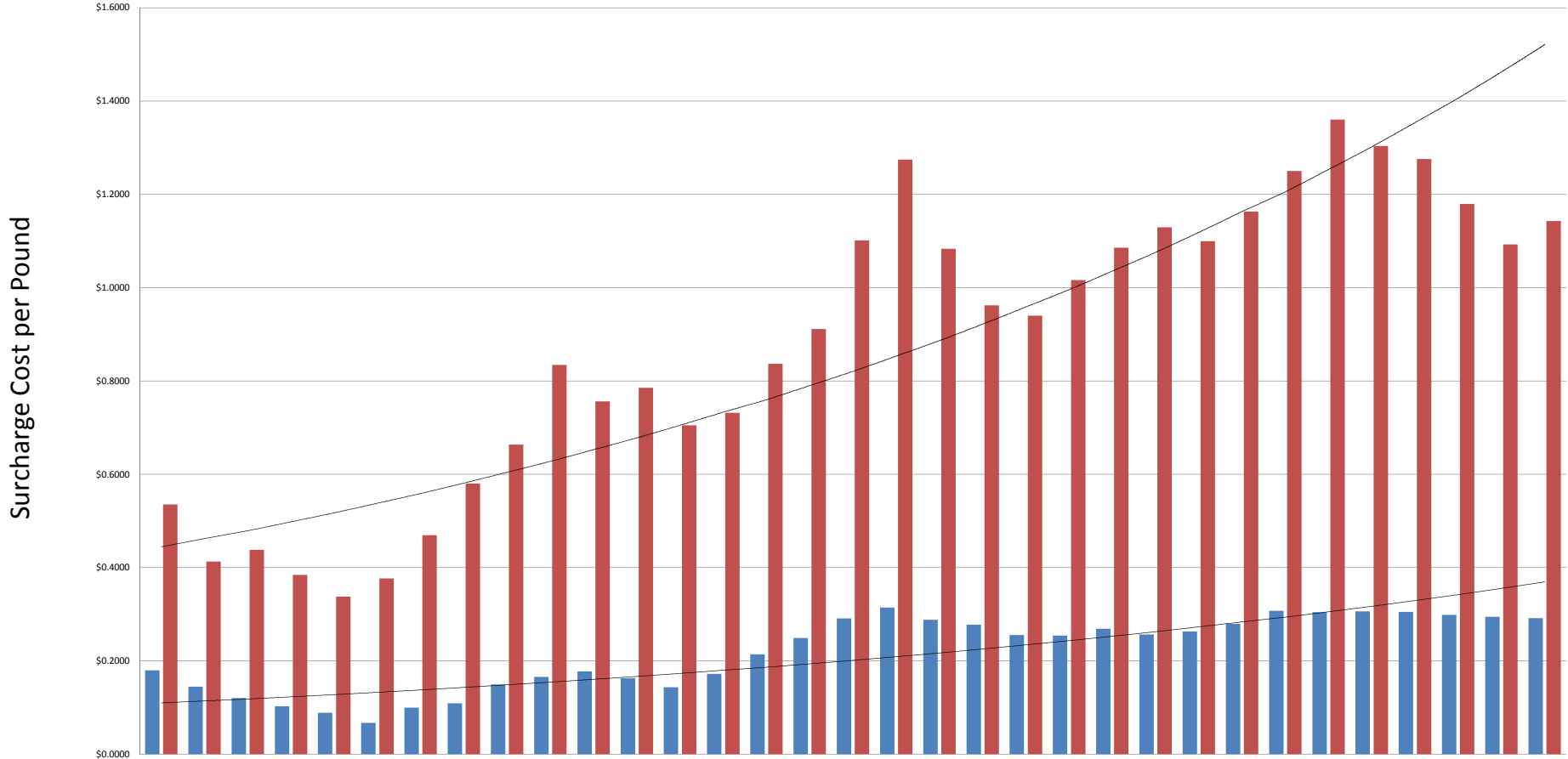


ALLOY SURCHARGES 2009 - 2011



	Jan-09	Feb-09	Mar-09	Apr-09	May-09	Jun-09	Jul-09	Aug-09	Sep-09	Oct-09	Nov-09	Dec-09	Jan-10	Feb-10	Mar-10	Apr-10	May-10	Jun-10	Jul-10	Aug-10	Sep-10	Oct-10	Nov-10	Dec-10	Jan-11	Feb-11	Mar-11	Apr-11	May-11	Jun-11	Jul-11	Aug-11	Sep-11
■ Cromgard	\$0.1794	\$0.1447	\$0.1200	\$0.1027	\$0.0888	\$0.0671	\$0.0999	\$0.1092	\$0.1495	\$0.1653	\$0.1775	\$0.1629	\$0.1432	\$0.1722	\$0.2141	\$0.2491	\$0.2909	\$0.3143	\$0.2879	\$0.2777	\$0.2553	\$0.2543	\$0.2689	\$0.2566	\$0.2630	\$0.2790	\$0.3071	\$0.3045	\$0.3063	\$0.3049	\$0.2986	\$0.2945	\$0.2917
■ 304 SS	\$0.5352	\$0.4125	\$0.4378	\$0.3840	\$0.3377	\$0.3767	\$0.4696	\$0.5800	\$0.6634	\$0.8342	\$0.7562	\$0.7856	\$0.7050	\$0.7319	\$0.8368	\$0.9115	\$1.1013	\$1.2745	\$1.0834	\$0.9619	\$0.9398	\$1.0160	\$1.0853	\$1.1293	\$1.0996	\$1.1631	\$1.2497	\$1.3602	\$1.3034	\$1.2757	\$1.1792	\$1.0925	\$1.1429